



Model: POE40

4-Channel Gigabit POE+ Extender



 4-Channel	66W Max Power Budget	 Watchdog
--	--------------------------------	---

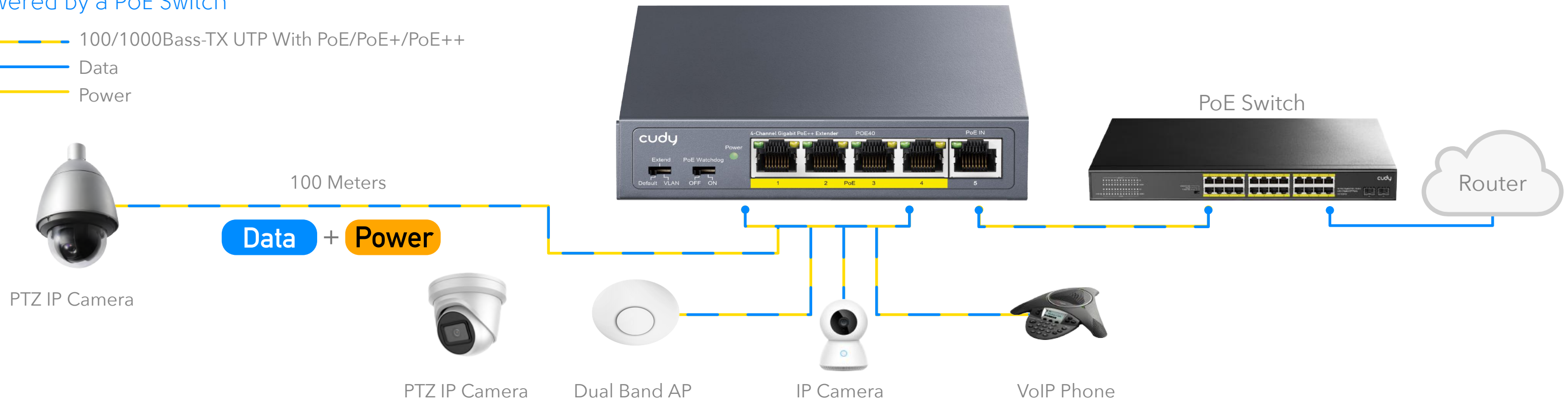
[Datasheet](#)



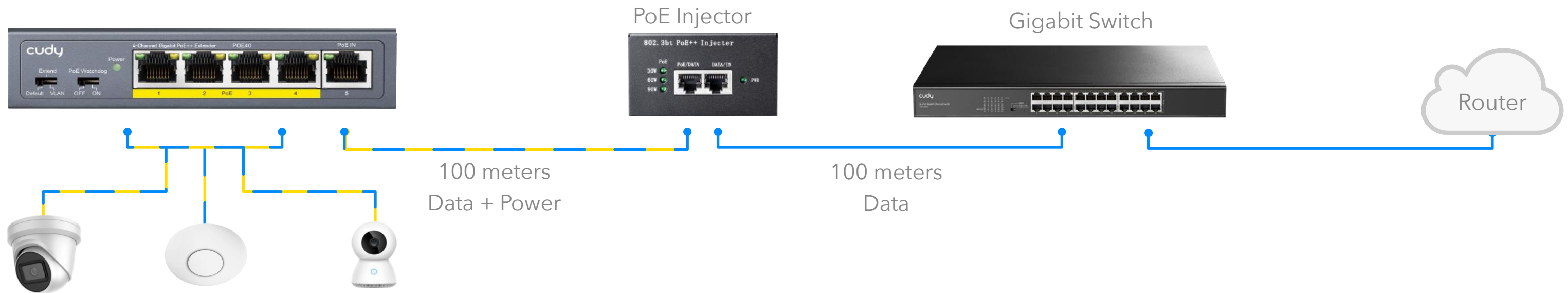
Topology | How to Use

Powered by a PoE Switch

- 100/1000Base-TX UTP With PoE/PoE+/PoE++
- Data
- Power



Powered by a PoE Injector





Highlights

A 4-channel PoE extender that extends the PoE distance by 100m.

- GbE In, 4× GbE Out
- 802.3bt/at/af Max 60W Input
- 4× 802.3at/af Max 25.5W Output
- Desktop or Wall-Mount

Package Content

- POE40
- Mounting Kit
- Installation Guide

Specifications

Protocols	802.3 Protocols	802.3i 10 Mbps over Twisted Pair
		802.3u 100 Mbps over Twisted Pair
		802.3ab 1 Gbps over Twisted Pair
		802.3x Flow Control
		802.3af PoE
		802.3at PoE
		802.3bt PoE

PoE	PoE In	1 × GbE, 802.3bt/at/af
	PoE Out	4 × GbE, 802.3at/af
	Pin Assignment	1/2 (-), 3/6 (+) and 7/8 (-), 4/5 (+)
	Transmission Distance	Class 1 (Extra 100m)
Power	Max Power Input	60W
	Max Power Output	2 × 25.5W or 4 × 12.95W
	Max Power Consumption (W)	2W
Reliability	Client Protection	Polarity Protection
		Overvoltage Protection
		Short-Circuit Protection
		Automatic Voltage Regulation
	Lightning/Surge Protection	6kV
	ESD Contact Protection	6kV
	ESD Air Protection	8kV
	Grounding Methods	Grounding Point
	Environment	Operating Temp: 0~45 °C (32~113 °F)
		Storage Temp: -40~70 °C (-40~158 °F)
		Operating Rh: 10%~95% non-condensing
		Storage Rh: 5%~95% non-condensing
Certifications	FCC, CE	
Mechanical	Install in a Daisy Chain	Up to 3 extenders in a chain
	Installation	Desktop, Wall-mount
	Casing Material	Metal
	Dimension	119×85×28 mm 4.69×3.35×1.1"