



Model: LT400

# 4G LTE

## N300 Wi-Fi Router

- ✓ 4G LTE FDD & TDD
- ✓ 150Mbps LTE + 300Mbps Wi-Fi
- ✓ PPTP/L2TP VPN Client
- ✓ Qualcomm Chipset Inside





## Enjoy Blazing Fast 4G LTE Network

Enjoy Blazing Fast 4G LTE and Wi-Fi Speed. LT400 uses the latest generation 4G LTE technology to reach speeds of up to 150Mbps in download and 50Mbps in upload. It also allows you to connect via Wi-Fi with a maximum speed of 300Mbps on 2.4GHz to enjoy gaming, streaming, and much more.

## Get Wi-Fi Where You Need It

Tested in the field for years to ensure universal compatibility with 4 advanced antennas to deliver a smooth connection. Simply plug in a SIM card and power on this elegant piece of technology to utilize fast and stable Wi-Fi, whether you're at home or working remote.

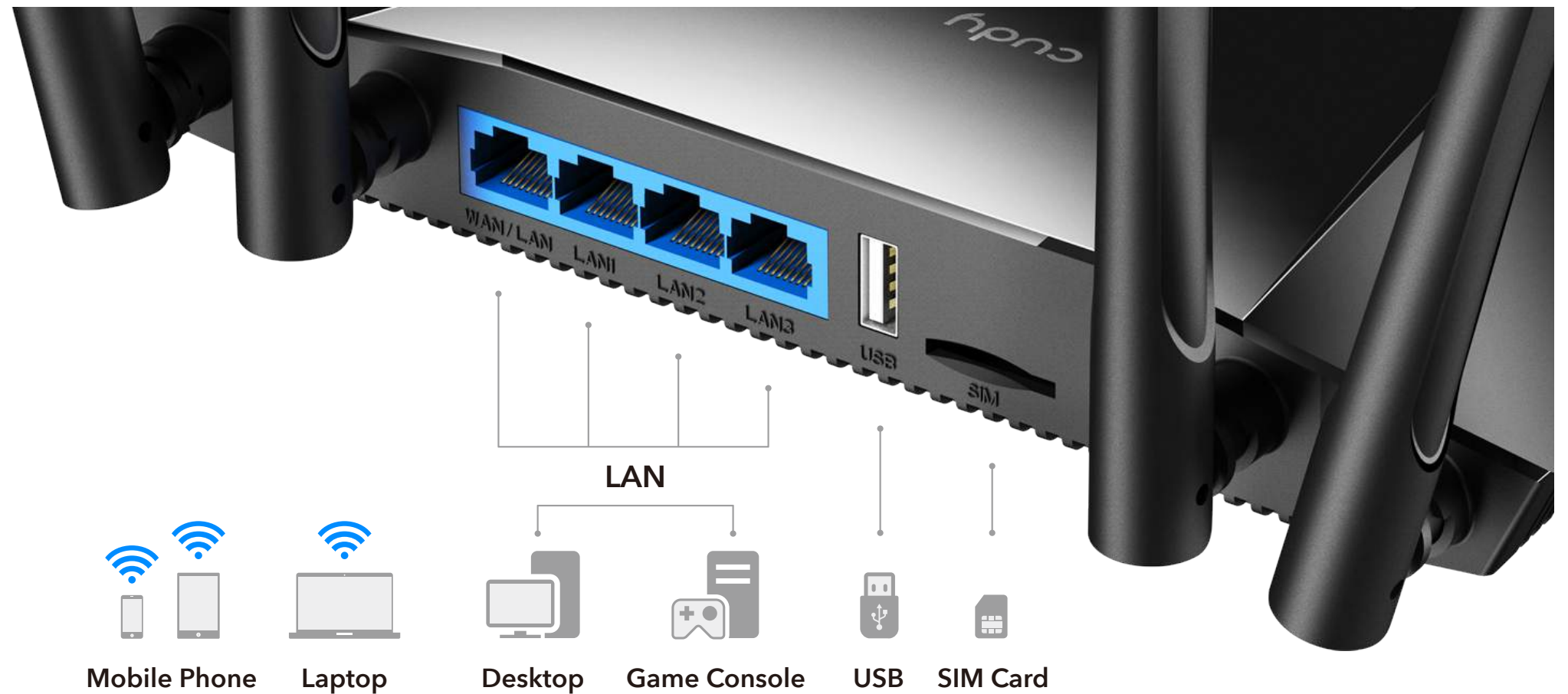


## Plug and Play

With an integrated 4G LTE modem and a built-in SIM card slot, all you need to do is insert a micro SIM card and turn on the router. Enjoying fast, stable Wi-Fi on a 4G LTE network has never been easier.

## Flexible WAN/LAN Port

The WAN/LAN port can be configured as a WAN or LAN port. When working on LAN mode, LT400 is just a normal 4G LTE router. While working on WAN mode, LT400 can maintain 4G and WAN connections at the same time, and provide Internet preferentially from wired ports to reduce 4G mobile data tariffs.



## Interface

- 1 x 10/100Mbps WAN/LAN Port
- 3 x 10/100Mbps LAN Ports
- 1 x USB Port
- 1 x Power Jack
- 1 x SIM Card Slot

## LED Indicators

- 4G
- WiFi
- LAN1~LAN3
- WAN/LAN
- INTERNET
- Power

## Software



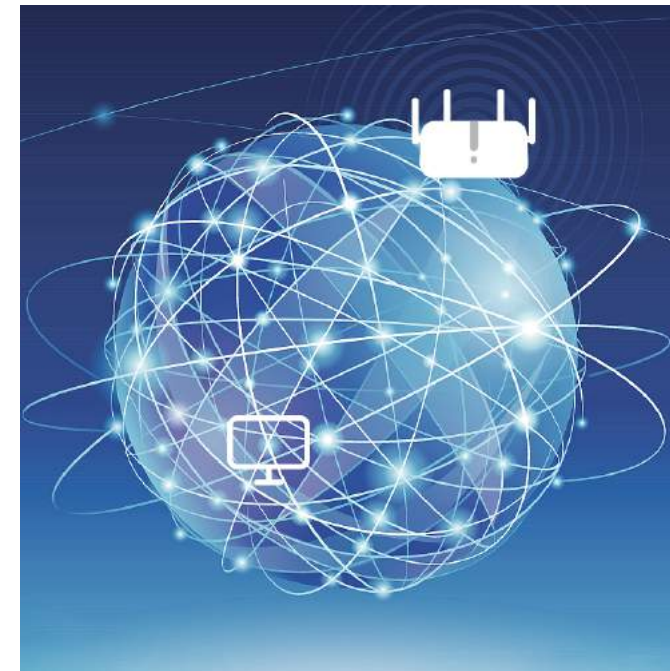
### FDD+TDD

Support FDD and TDD, meet the needs of various ISPs and provide a good user experience for customers. Support most cellular operators around the world.



### VPN Client

With built-in VPN client, this router can easily establish a connection to VPN Server to transport all your online data and traffic, securing it with its encryption at the same time.



### DDNS

By assigning a custom domain name to your home router's IP address, DDNS function will update automatically as your home IP continues to change. Compatible with 15 more DDNS providers.



### Guest Network

Guest Network separate guest access from your family network. Maintain high security across your network to help ensure your privacy is safe while online.



# Specifications

- Up to 150Mbps / 50Mbps LTE speed
- Up to 300 Mbps WiFi speed
- Support PPTP/L2TP VPN client for security connections
- Support 20+ DDNS for remote management
- USB port for easy storage and sharing
- 4G watchdog can automatically redial when disconnected
- WiFi schedule supports configuration of available WiFi time
- Flexible WAN/LAN port for dual connectivity

# Hardware Specification

|            |   |
|------------|---|
| CPU        | MTK Chipset for Wi-Fi and Qualcomm Chipset for 4G |
| DRAM/FLASH | 64MB DDR2 / 8M SPI Flash                          |
| Interface  | 3x RJ45 10M/100M LAN Ethernet interfaces          |
|            | 1 x RJ45 10M/100M LAN/WAN Ethernet interfaces     |
|            | 1 x Reset   |
|            | 1 x USB2.0  |
|            | 1 x SIM (Standard)                                |
| Antenna    | 2.4G (802.11N): 2T2R 4G: 2T2R                     |

|                           |  |
|---------------------------|--|
| Gain                      | 5dBi                                   |
| Frequency                 | 2.4-2.4835GHZ                          |
| LED                       | PWR、WIFI、4G、LAN1-LAN3、WAN/LAN          |
| Transmit Power            | 11b: 1/2/5.5/11Mbps                    |
|                           | 11g: 6/9/12/18/24/36/48/54Mbps         |
|                           | 11n: 300Mbps (MAX)                     |
| Spread-spectrum technique | DSSS                                   |
| Data Encryption           | WPA-PSK/WPA2-PSK、WPA/WPA2              |
| Modulation type           | 11b: CCK、QPSK、BPSK                     |
|                           | 11g: OFDM                              |
|                           | 11n: QPSK, BPSK, 16-QAM, 64-QAM        |
| Media access protocol     | CAMA/CA with ACK                       |
| RF Power                  | 11b: 18dBm@MC0-7                       |
|                           | 11g: 17dBm@6-54Mbps                    |
|                           | 11n: 16dBm@6-54Mbps                    |
| LTE Frequency Bands       | LTE-FDD: B1/B3/B7/B8/B20/B28A          |
|                           | LTE-TDD: B38/B40/B41                   |
| EU Version                | WCDMA: B1/B8<br>GSM/EDGE: B3/B8        |
| LTE Frequency Bands       | LTE-FDD: B2/B4/B5/B12/B13/B14/B66/ B71 |
| US Version                | WCDMA: B2/B4/B5                        |



## Software Features

|             |   |
|-------------|---|
| Management  | Parental Control                              |
|             | Guest Network                                 |
| DHCP        | Server, DHCP Client List, Address Reservation |
| Dynamic DNS | Compatible with 20 more DDNS providers.       |
| NAT         | Port Forwarding, Port Triggering, UPnP, DMZ   |
| VPN Client  | PPTP/L2TP                                     |

## Wireless Features

|                    |   |
|--------------------|---|
| Wireless Standards | IEEE 802.11n/b/g 2.4 GHz                      |
| Frequency          | 2.4 GHz                                       |
| Signal Rate        | 300 Mbps (2.4 GHz)                            |
|                    | Compatible with 802.11a/b/g/n Wi-Fi standards |
| Transmit Power     | CE: <20dBm                                    |
|                    | FCC:<30dBm                                    |
| Wireless Modes     | Enable/Disable Wireless Radio, WMM            |
| Wireless Functions | WEP, WPA/WPA2, WPA-PSK/WPA2-PSK               |

## Others

|                     |  |
|---------------------|--|
| Package             | 4G LTE WiFi Router   |
| Contents            | Power Adapter  |
|                     | RJ45 Ethernet Cable  |
|                     | Quick Installation Guide   |
|                     | SIM Card Adapter   |
| System Requirements | Microsoft Windows 98SE/NT/2000/XP/Vista™/7/8/8.1/10, MAC OS, NetWare, UNIX or Linux        |
|                     | Internet Explorer 11, Firefox 12.0, Chrome 20.0, Safari 4.0, or other Java-enabled browser |
|                     | Subscription with an internet service provider (for internet access)                       |