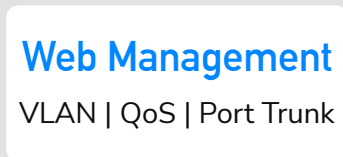
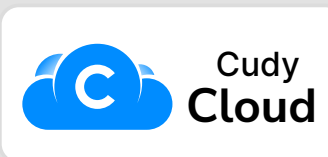




Model: HS108ES1

8-Port Multi-Gigabit Cloud Easy-Managed Switch with 10G SFP+



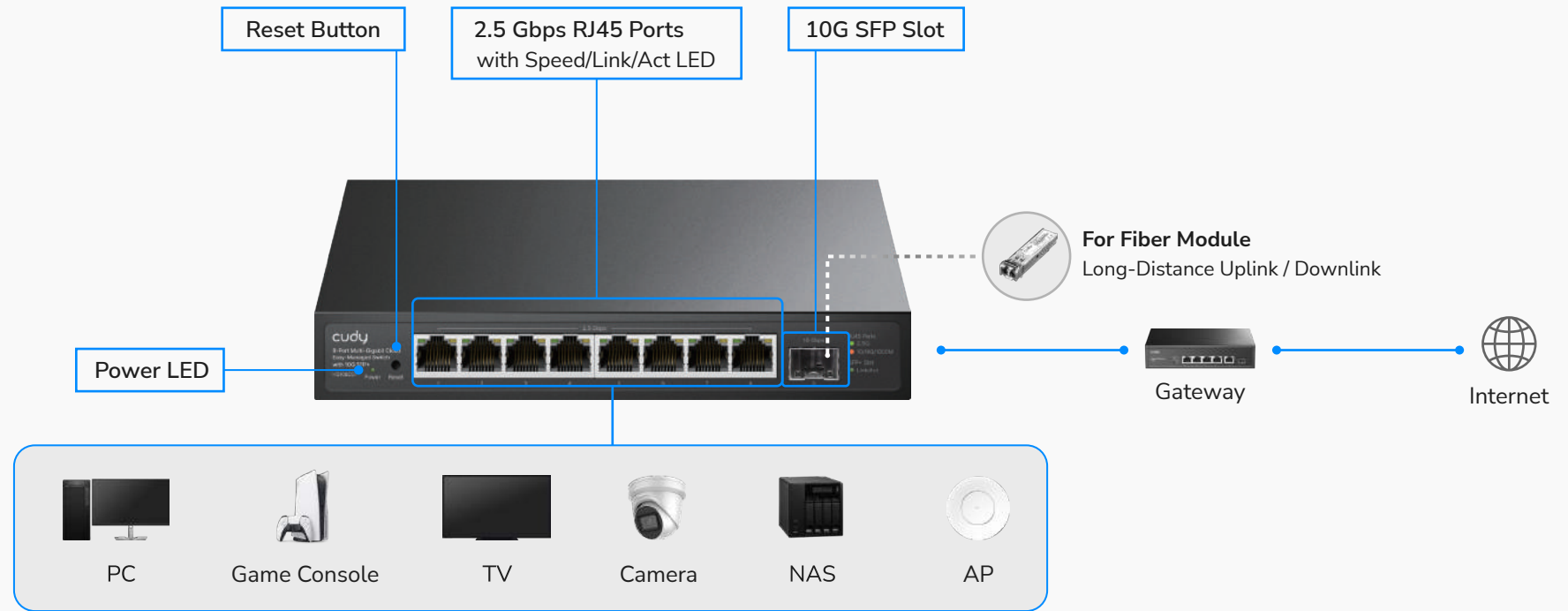
Cudy Cloud support may require firmware upgrade.
Firmware to be released in June 2026.
Cudy Cloud requires internet access and configuration.

[Datasheet](#)



Cudy Ethernet Switch

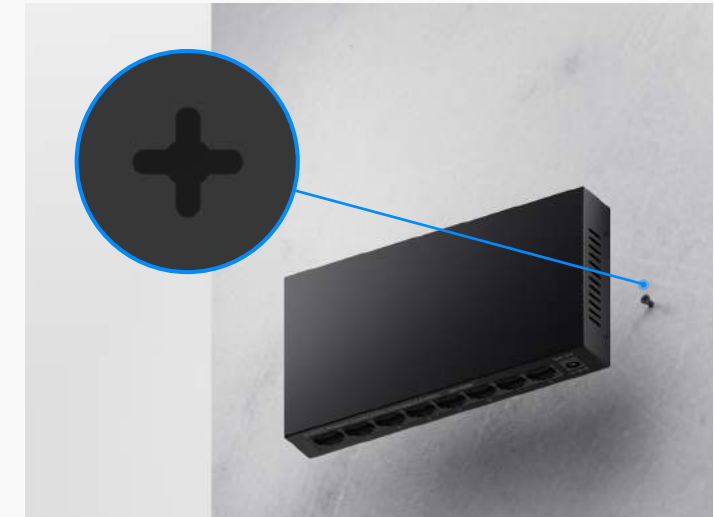
A reliable easy-managed switch with a 10G uplink and 2.5G downlinks for lightning-fast network distribution across buildings or floors. Designed for 2.5G access points, NAS, and high-bandwidth PC networking demand.



Provide 2.5G Business Wi-Fi for Customers



Build 2.5G Networks for Demanding Tasks

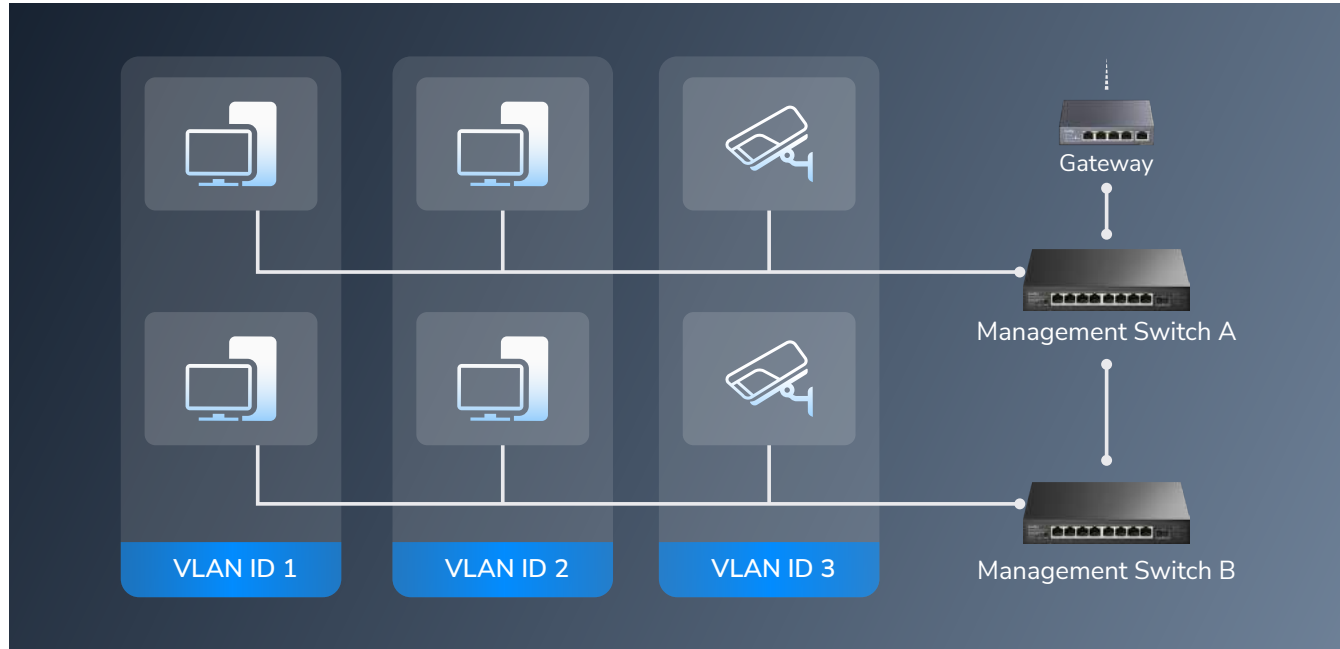


Save Spaves with Wallmounting



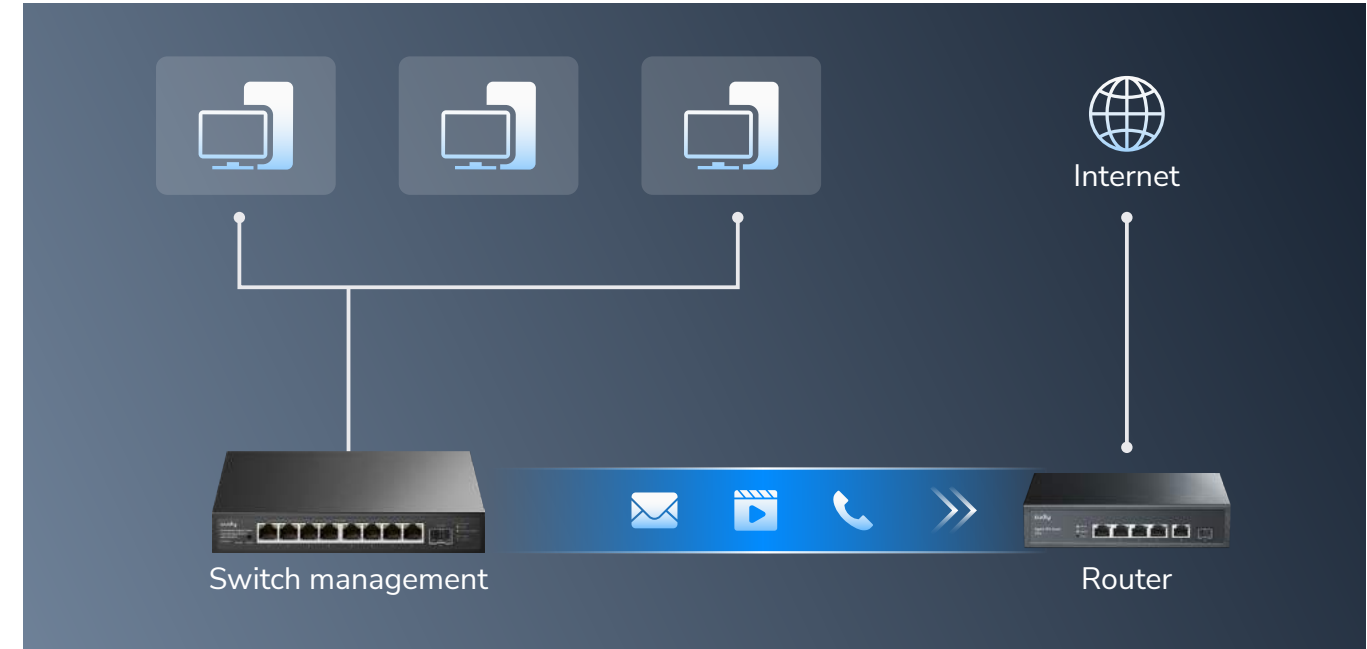
Essential Management Features

A software features introduction to Cudy Light-Managed Switches. The actual port number varies



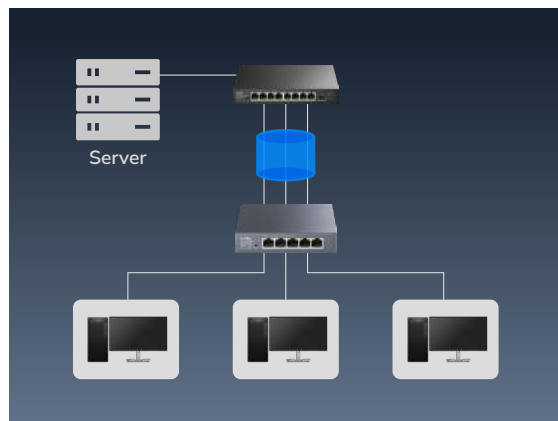
802.1Q VLAN

802.1Q VLANs allows creating secure and high-performance network segments across different managed switches.



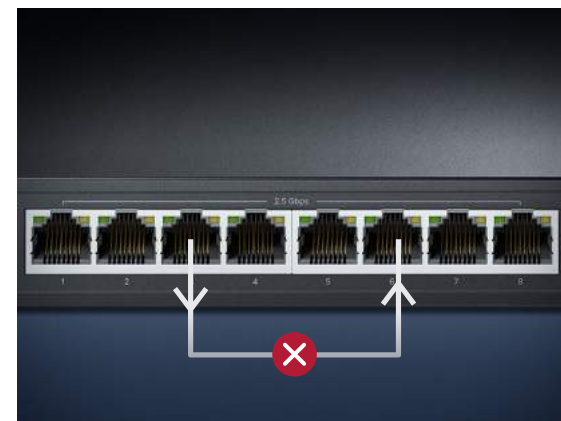
DSCP/802.1p/Port-Based QoS

DSCP/802.1p QoS identifies DSCP packets in the transmission and prioritize those latency-sensitive data.



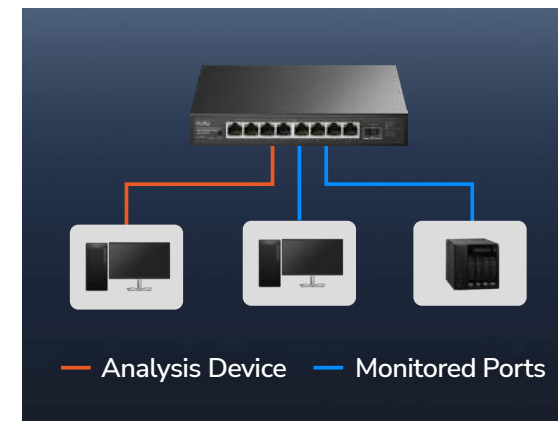
Link Aggregation

Allows creating multiple LAG groups and multiply the transmission speed of the backbone in your networks.



Loop Detection/Prevention

Automatically detects network loops and blocks affected ports. The indicators will show what ports caused loops.



Port Mirroring

Port Mirroring enables real-time diagnosis and troubleshooting by monitoring TX and/or RX traffic on one or multiple ports.



Cloud Management

Easily manage your switch via Cudy App. Configure VLAN settings and monitor throughput performance at your fingertips.

Highlights

- 8× 2.5GbE, 1× 10G SFP+
- Web Management
- VLAN, QoS, Port Trunk, etc
- Loop Detection and Prevention
- EEE (802.3az Power Saving)
- Desktop, Wall-Mount
- 190×100×28 mm (7.48×3.94×1.1")

Package Content

- HS108ES1
- Power Adapter
- Installation Guide

Specifications

Model Version	HS108ES1 1.0		
Interfaces	10G SFP+ Slots	1	
	2.5G RJ45 Ports	8	
	Ethernet Notes	SFP+ supports 10G/2.5G/1G speeds.	
	Shielded RJ45 Port	√	
	Extend Mode Ports	Configurable	
	VLAN Mode Ports	Configurable	
	LED	Power	
		Speed/Link/Act of Each Ethernet Port (2.5 Gbps)	
		Link/Act of Each Ethernet Port (10/100/1000 Mbps)	
	Physical Buttons	Reset Button	
Performance	Max Copper Speed and Distance	Cat. 3 or higher cable: 100 meters at 10 Mbps	
		Cat. 5 or higher cable: 100 meters at 100 Mbps	
		Cat. 5e or higher cable: 100 meters at 2.5 Gbps	
		Cat. 5e or higher cable: 250 meters at 10 Mbps	
	Copper Speed and Distance Note	250-meter transmission is available when the port speed is set at 10 Mbps in the software.	
	Optical Spec and Distance	Depends on the Installed Optical Module	
	MAC Address Table	4096	
	VLANs	4096	
	Max Switching Capacity	60 Gbps	
	Max Forwarding Rate	44.64 Mpps	
Jumbo Frame	9 KB		
Packet Buffer	4 Mbit		

Specifications

Power	Power Input Type	DC Jack
	Power Methods	DC
	Power Input	12V=1A
	Power Adapter in the Box	Input: 100-240V~, 50/60Hz Output: 12V=1A
	Max Power Consumption	10W (with SFP-RJ45 Module) 9W (with SFP-SC Module)
	Idle Power Consumption	3.7W
	Switching	802.3 Protocols
802.3i 10BASE-T		
802.3u 100BASE-TX		
802.3ab 1000BASE-T		
802.3bz 2.5GBASE-T		
2.5GBASE-X		
802.3z 1000BASE-X		
802.3ae 10GBASE-R		
802.1 Protocols		802.1p: LAN Layer 2 QoS/CoS
		802.1q: VLAN Bridge Operation

Switching	Port Management	Port On/Off	
		Port Negotiation Speed	
		Port Trunk (Static Aggregation)	
		Port Mirror	
		Data Rate Limit	
		Jumbo Frame Settings	
		Storm Control	
		Traffic Monitor	
		MAC Address Management	
		EEE (802.3az)	
		Port Mirror Sessions	1
		Port Trunk Groups	2
		Max Port Number per Port Trunk Group	4
		L2 Features	Loop Prevention
			Loop Detection
			802.1Q VLAN
			DSCP QoS
			802.1p QoS
			Port-Based QoS

Specifications

Reliability	Grounding Methods	Grounding Point	
	EMS	IEC/EN 61000-4-2, Level 3 ESD: Contact: 6kV; Air: 8kV IEC/EN 61000-4-5, Level 3 Surge: Power: DM 2kV, CM 2kV; RJ45: CM 6kV	
Environment	Operating Temperature: 0 °C ~ 40 °C (32 °F ~104 °F)		
	Storage Temperature: -40 °C ~ 70 °C (-40 °F ~ 158 °F)		
	Operating Humidity: 10% ~ 90% non-condensing		
	Storage Humidity: 5% ~ 90% non-condensing		
System	Control Methods	Config Web Page Cudy App (Available via firmware upgrade in July 2026)	
	Firmware Upgrade	Local Upgrade	
	Reliability	Backup and Restore	
	Diagnostic Tools	Ping	
	Languages	English, Bengali, German, Spanish	
		French, Portuguese, Russian, Arabic Indonesian, Hindi, Urdu Traditional Chinese Simplified Chinese	

Mechanical	Dimension	190×100×28 mm 7.48×3.94×1.1 inches
	Casing Material	Metal
	Installation	Desktop Wall-mount
	Package Content	HS108ES1 Power Adapter Installation Guide
Ordering Information	Retail Package Dimension	209×132×81.5 mm 8.23×5.2×3.21 inches
	Units per Carton	10
	Carton Dimension	43.8×42.8×15.1 cm 17.24×16.85×5.94 inches