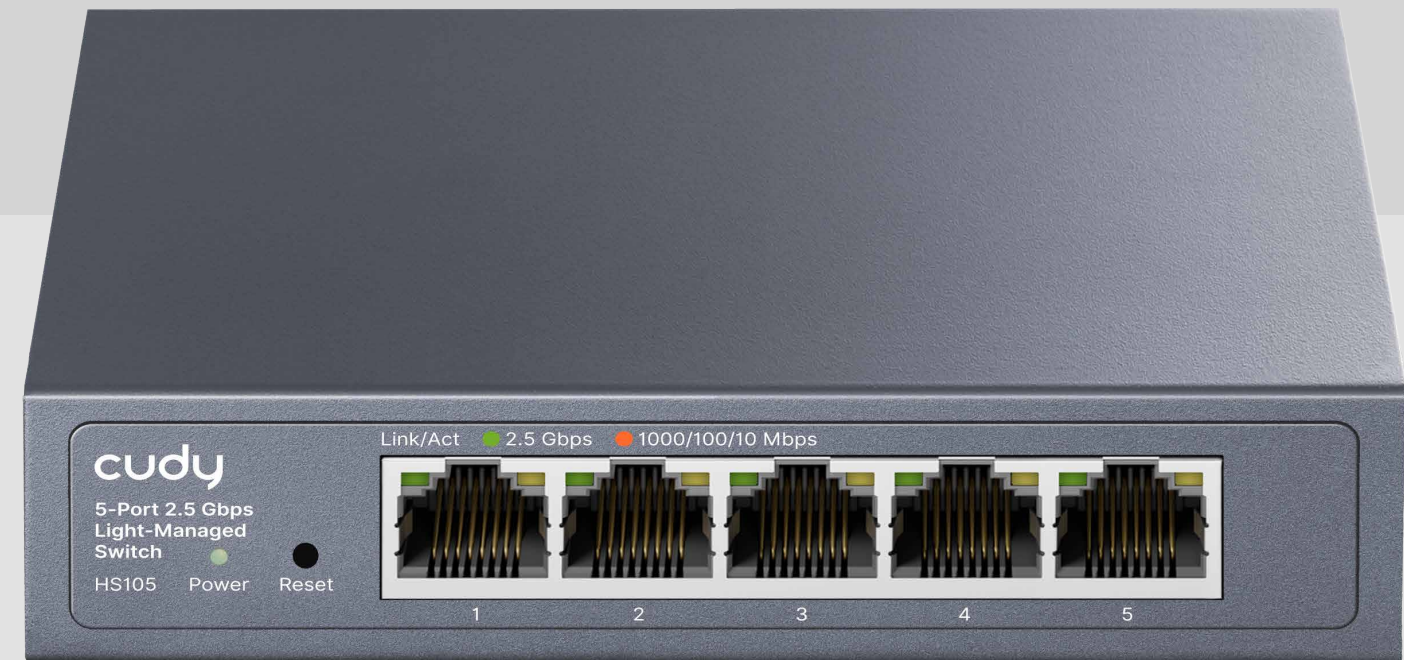




Model: HS105

5-Port 2.5G Easy-Managed Switch



Web Management
VLAN | QoS | Port Trunk

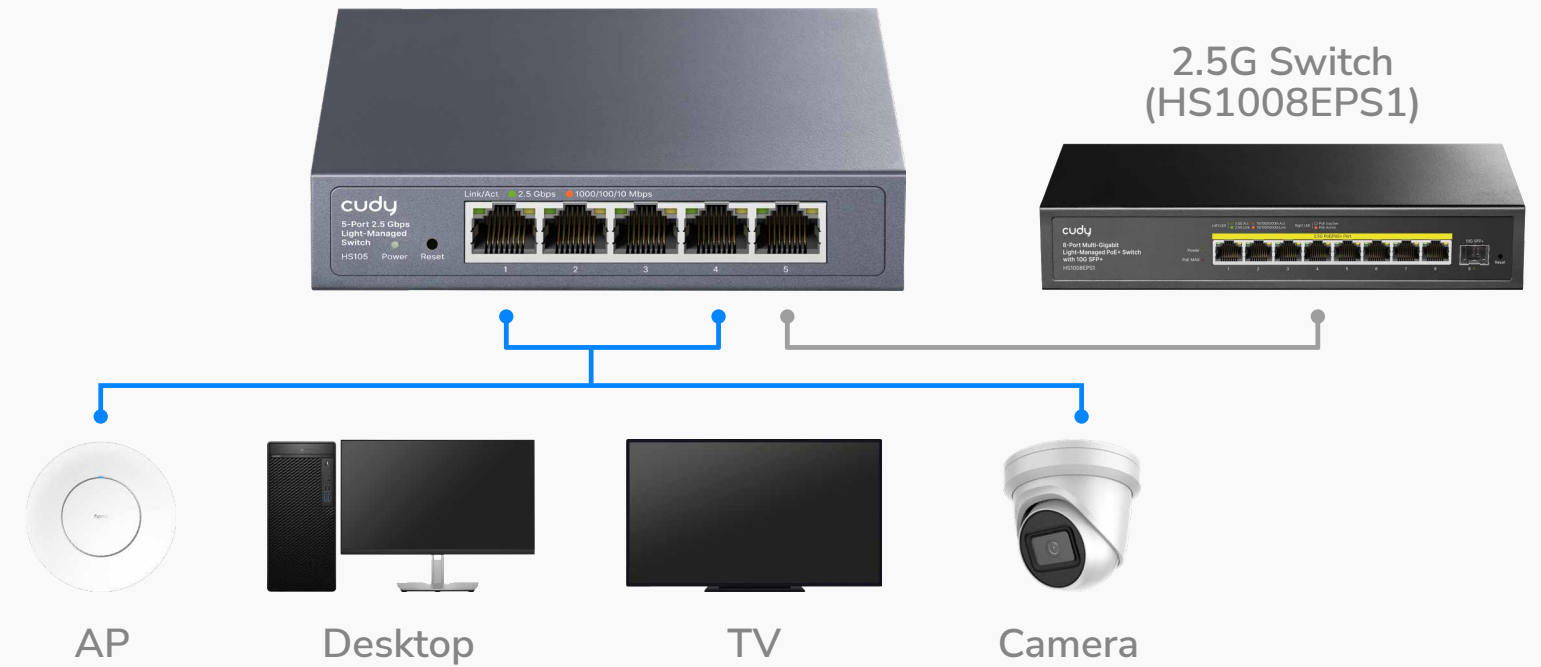


[Datasheet](#)

*Cudy Cloud is available with future firmware upgrade. Status Published on Apr 2026.

Cudy Ethernet Switch

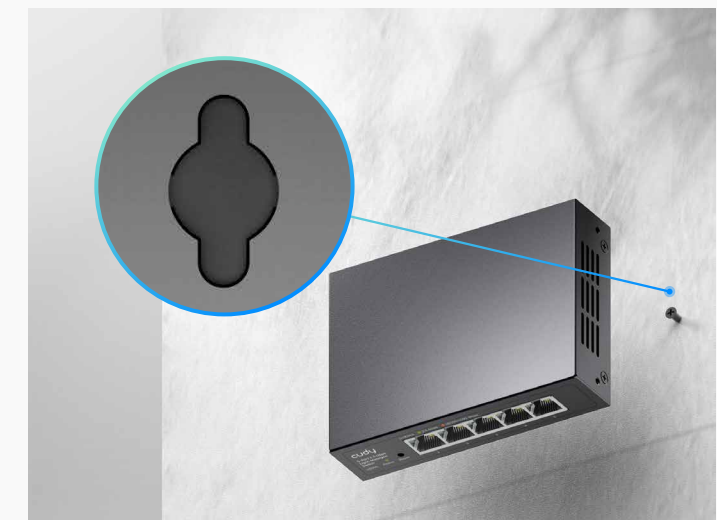
A reliable easy-managed switch with full 2.5G ports. In addition to the ultra-fast performance, it offers essential management features to keep your network secure, efficient, and easy to control.



10/100/1000/2500 Mbps Speeds

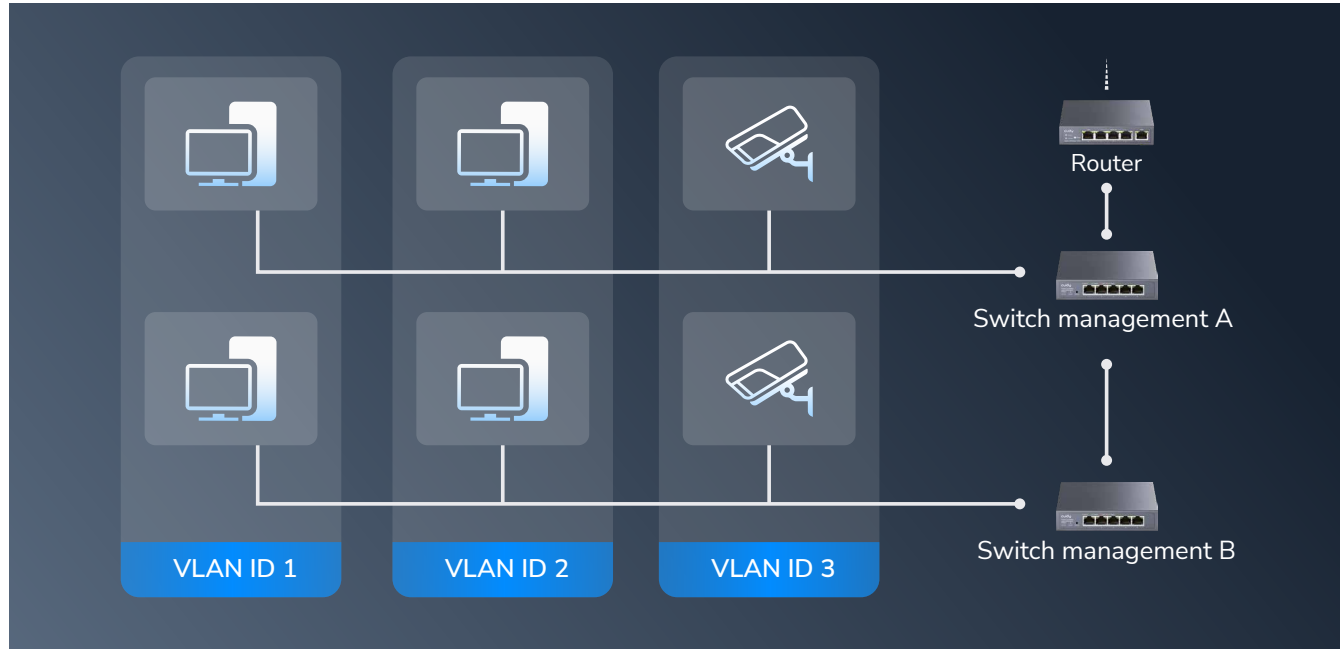


Saves Power. Saves Bills.



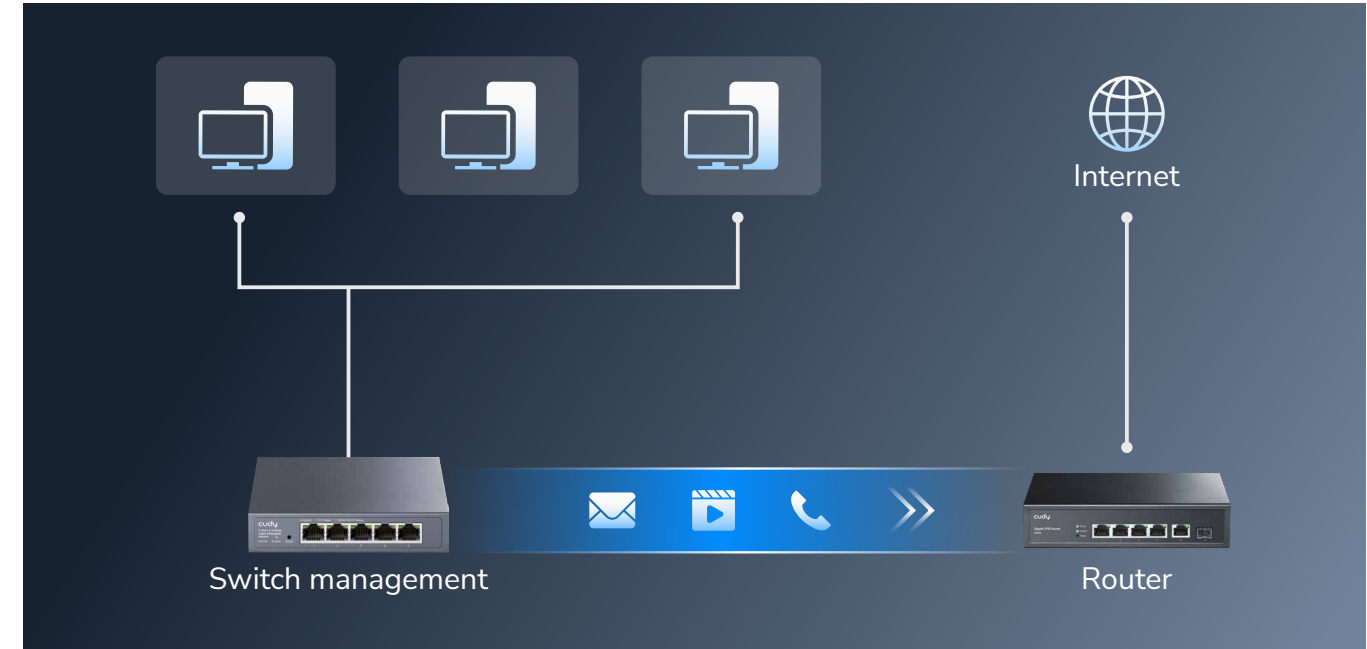
Wall-Mount

Essential Management Features



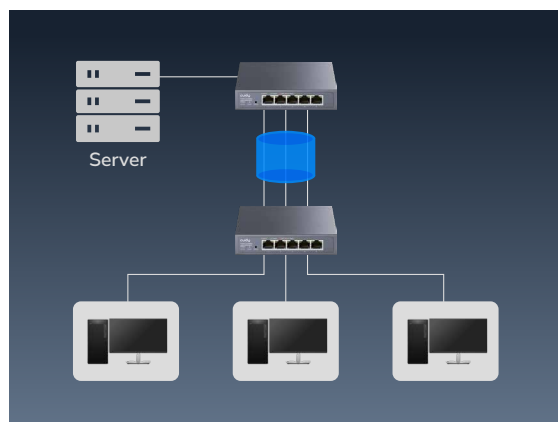
802.1Q VLAN

802.1Q VLANs allows creating secure and high-performance network segments across different managed switches.



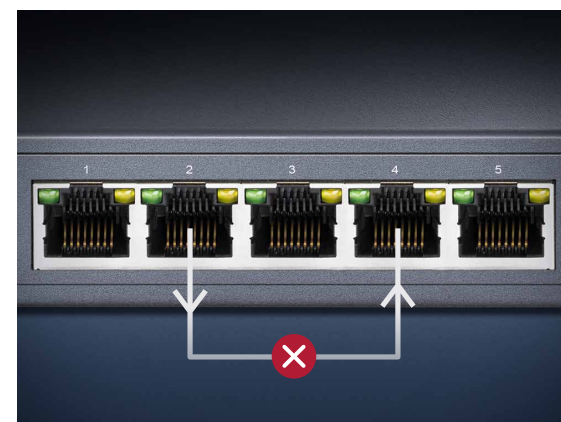
DSCP/802.1p/Port-Based QoS

DSCP/802.1p QoS identifies DSCP packets in the transmission and prioritize those latency-sensitive data.



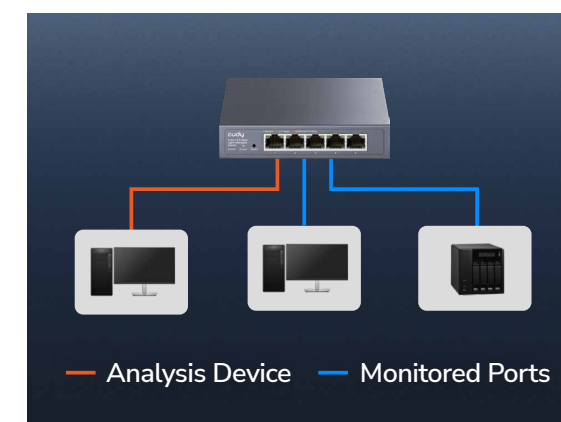
Link Aggregation

Allows creating multiple LAG groups and multiply the transmission speed of the backbone in your networks.



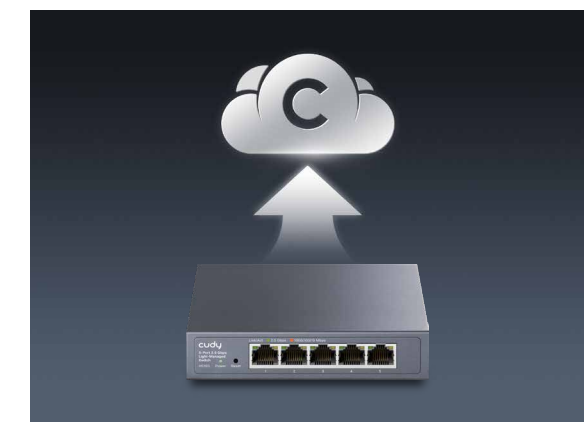
Loop Detection/Prevention

Automatically detects network loops and blocks affected ports. The indicators will show what ports caused loops.



Port Mirroring

Port Mirroring enables real-time diagnosis and troubleshooting by monitoring TX and/or RX traffic on one or multiple ports.



Cloud Management

Easily manage your switch via Cudy App. Configure VLAN settings and monitor throughput performance at your fingertips.

Highlights

A 5-Port 2.5G switch with management features and metal casing, ideal for 2.5 Gbps wired network expansion for NAS or bandwidth-intensive demands.

- 5× 2.5G Ethernet Ports
- Web Management
- VLAN, QoS, Port Trunk, etc
- Loop Detection and Prevention
- Desktop, Wall-Mount
- 119×85×28 mm (4.69×3.35×1.1")

Package Content

- HS105
- Power Adapter
- Installation Guide

Specifications

Interfaces	2.5 Gbps RJ45 Ports	5
	Extend Mode Ports	Configurable
	VLAN Mode Ports	Configurable
	LED	Power Speed/Link/Act of Each Ethernet Port
	Power Input	DC Input
Performance	Copper Speed and Distance	Cat. 3 or higher cable: 100 meters at 10 Mbps Cat. 5 or higher cable: 100 meters at 100 Mbps Cat. 5e or higher cable: 100 meters at 2.5 Gbps Cat. 5e or higher cable: 250 meters at 10 Mbps
	Copper Speed and Distance Note	250-meter transmission is available when the port speed is set at 10 Mbps in the software.
	MAC Address Table	4096
	Max Switching Capacity	25 Gbps
	Max Forwarding Rate	18.6 Mpps
	Jumbo Frame	9 KB
	Packet Buffer	4 Mbit
Power	Power Methods	DC
	Power Input	12V=1A
	Power Adapter in the Box	Input: 100-240V~, 50/60Hz Output: 12V=1A

Specifications

Reliability	Grounding Methods	Grounding Point
	EMS	IEC/EN 61000-4-2, Level 2 ESD: Contact: 4kV; Air: 8kV IEC/EN 61000-4-5, Level 3 Surge: Power: DM 2kV, CM 2kV; RJ45: CM 4kV
	Environment	Operating Temperature: 0 °C ~ 40 °C (32 °F ~104 °F)
		Storage Temperature: -40 °C ~ 70 °C (-40 °F ~ 158 °F)
		Operating Humidity: 0% ~ 100% non-condensing
		Storage Humidity: 10% ~ 95% non-condensing
Mechanical	Dimension	119×85×28 mm
		4.69×3.35×1.1 inches
	Casing Material	Metal
	Installation	Desktop
		Wallmount via mounting holes
Ordering Information	Retail Package Dimension	165×123×60 mm
		6.5×4.84×2.36 inches
	Units per Carton	20
	Carton Dimension	37.6×26.4×33.8 cm
		14.8×10.39×13.31 inches

Switching	802.3 Protocols	802.3x Flow Control	
		802.3i 10BASE-T	
		802.3u 100BASE-T	
		802.3ab 1000BASE-T	
		802.3bz 2.5GBASE-T	
		802.3az Power Saving	
	802.1 Protocols	802.1p: LAN Layer 2 QoS/CoS	
		802.1q: VLAN Bridge Operation	
	Port Management	Port On/Off	
		Port Negotiation Speed	
		Port Trunk (Static Aggregation)	
		Port Mirror	
		Data Rate Limit	
		Jumbo Frame Settings	
		Storm Control	
		Traffic Monitor	
		MAC Address Management	
		Port Mirror Sessions	1
		Port Trunk Groups	2
		Max Port per Port Trunk Groups	4



Specifications

Switching	L2 Features	Loop Prevention
		802.1Q VLAN
		DSCP QoS
		802.1p QoS
		Port-Based QoS

System	Control Methods	Config Web Page
		Cudy App (Requires FW upgrade)
	Firmware Upgrade	Local Upgrade
	Reliability	Backup and Restore
	Diagnostic Tools	Cable Status/Length Diagnosis
		Ping
	Languages	English
		Bengali
		German
		Spanish
		French
		Portuguese
		Russian
		Arabic
		Indonesian
		Hindi
		Urdu
		Traditional Chinese
		Simplified Chinese