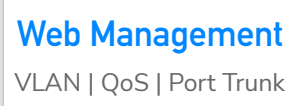
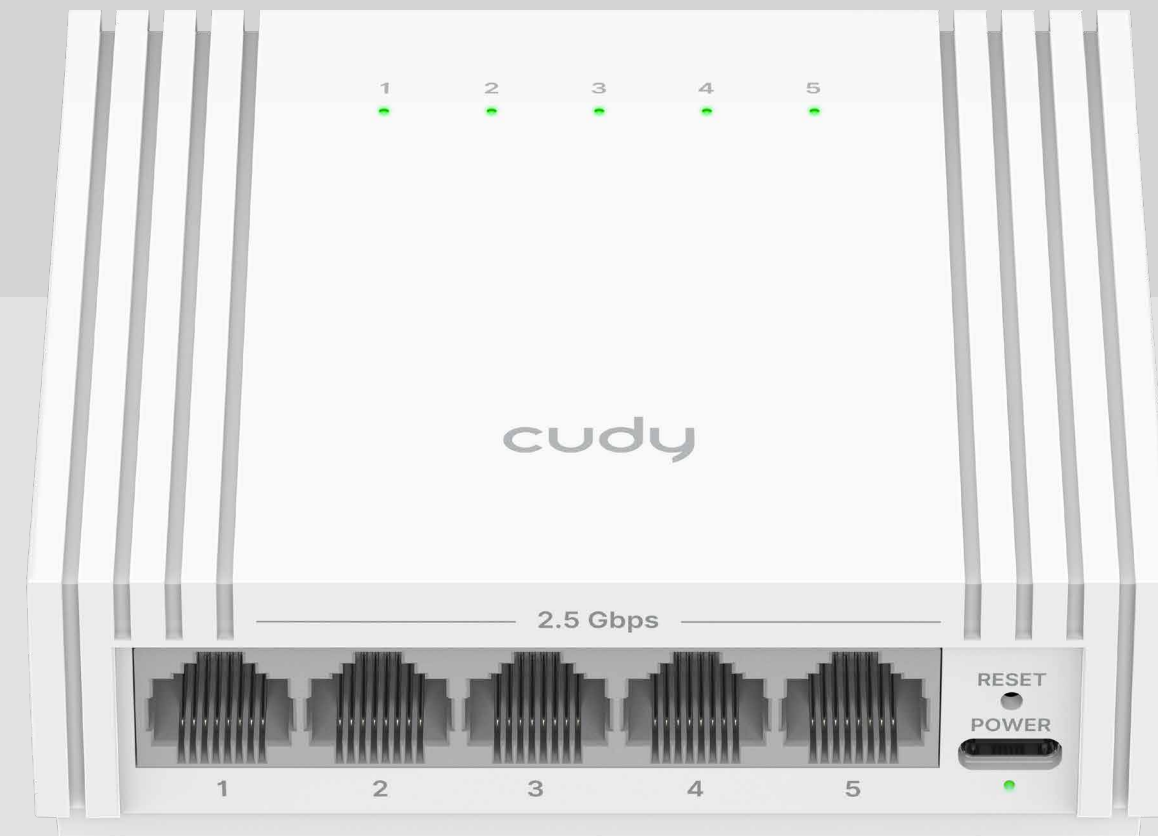




Model: HS105U

5-Port 2.5G Easy-Managed Switch with USB-C Power Input



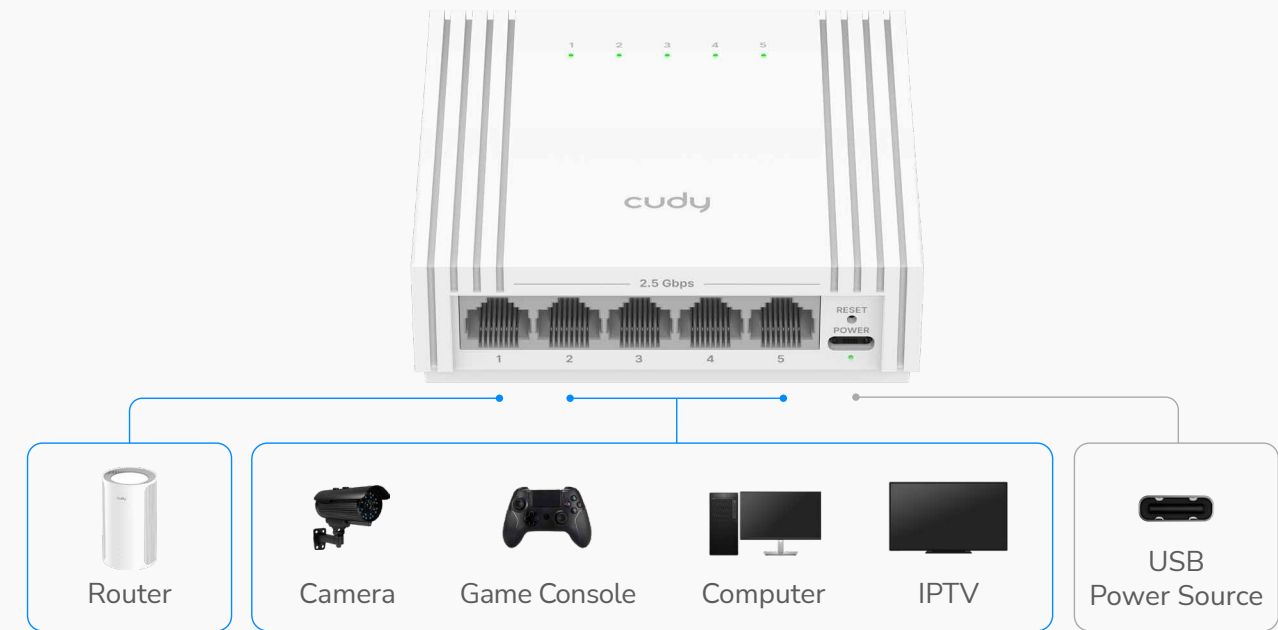
[Datasheet](#)

*Cudy Cloud is available with future firmware upgrade. Status updated on Apr 2026.

2.5G Easy-Managed Switch

A reliable easy-managed switch with full 2.5G ports. In addition to the ultra-fast performance, it offers essential management features to keep your network secure, efficient, and easy to control.

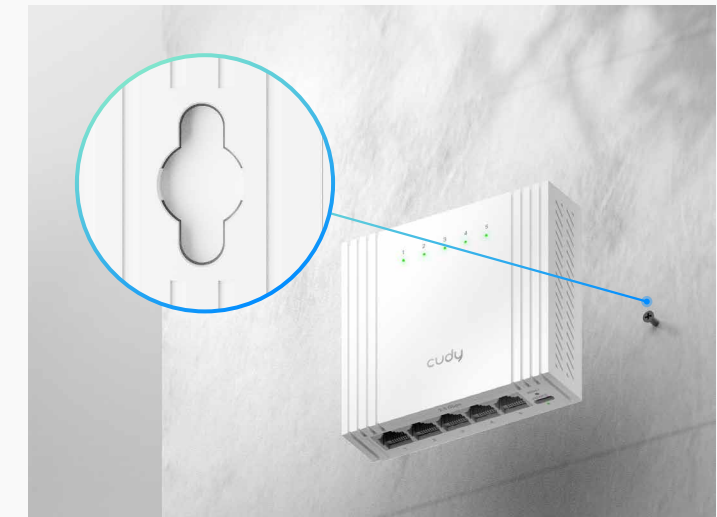
Full 2.5G Performance on Every RJ45 Port



10/100/1000/2500 Mbps Speeds

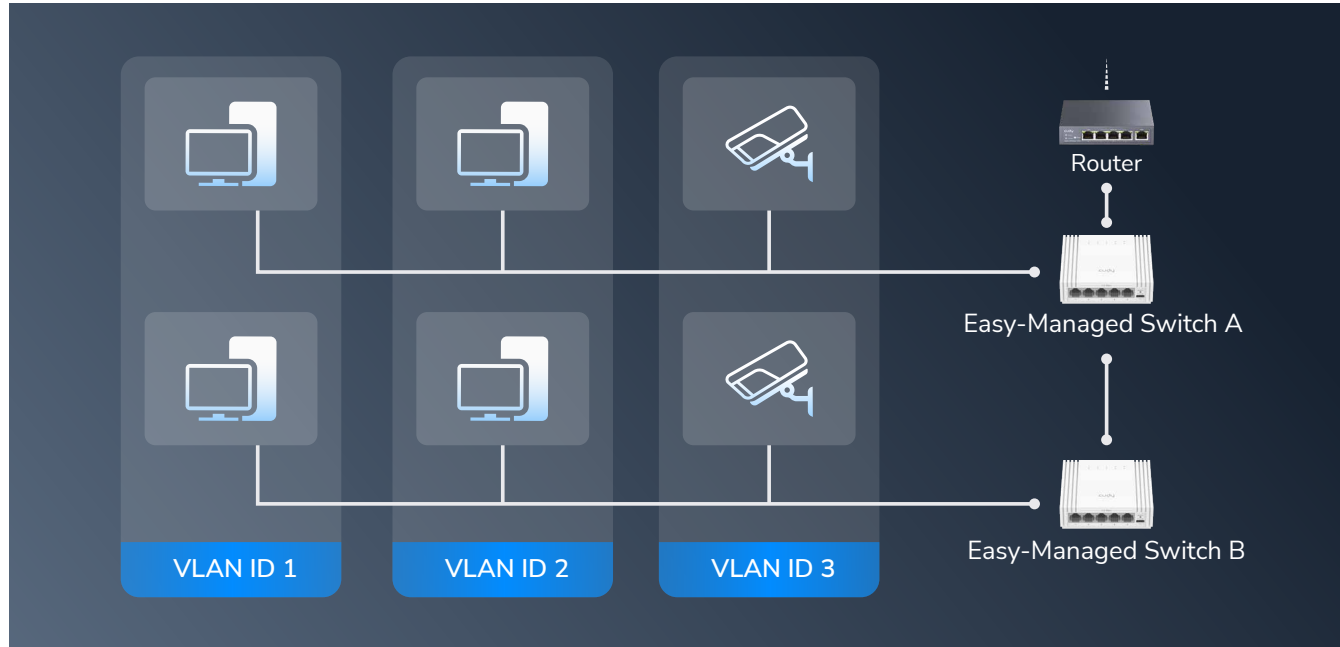


Saves Power. Saves Bills.



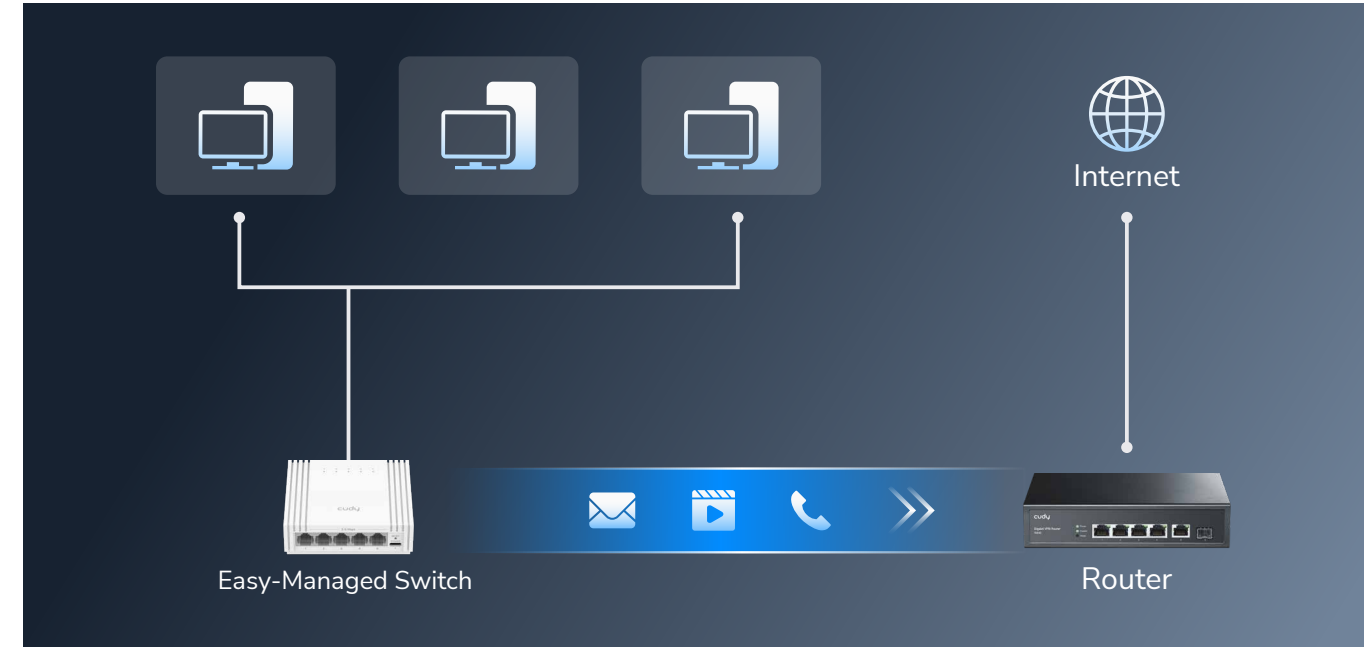
Wall-Mount

Essential Management Features



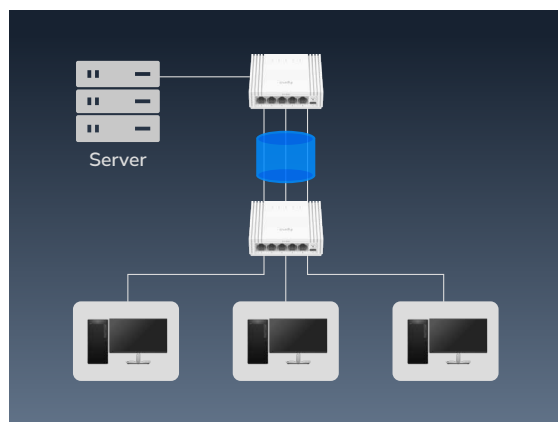
802.1Q VLAN

802.1Q VLANs allows creating secure and high-performance network segments across different managed switches.



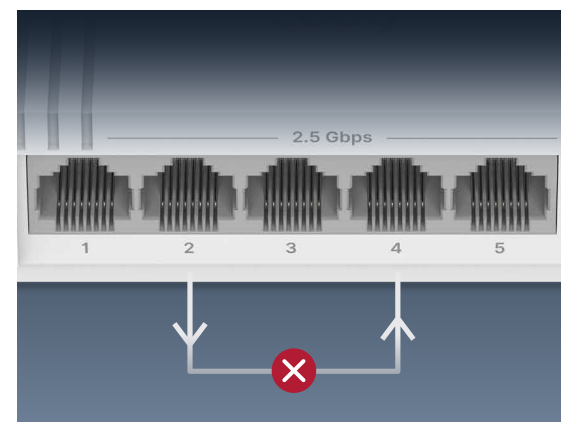
DSCP/802.1p/Port-Based QoS

DSCP/802.1p QoS identifies DSCP packets in the transmission and prioritize those latency-sensitive data.



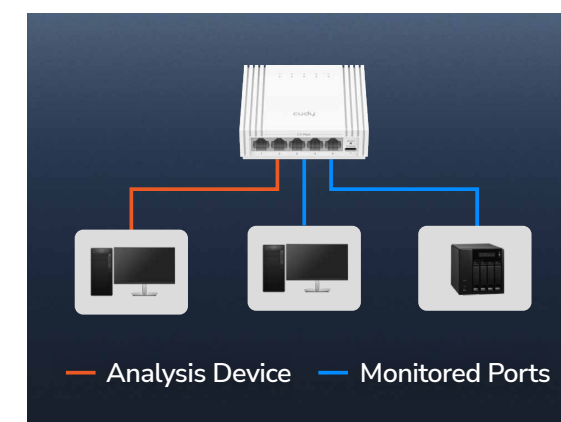
Link Aggregation

Allows creating multiple LAG groups and multiply the transmission speed of the backbone in your networks.



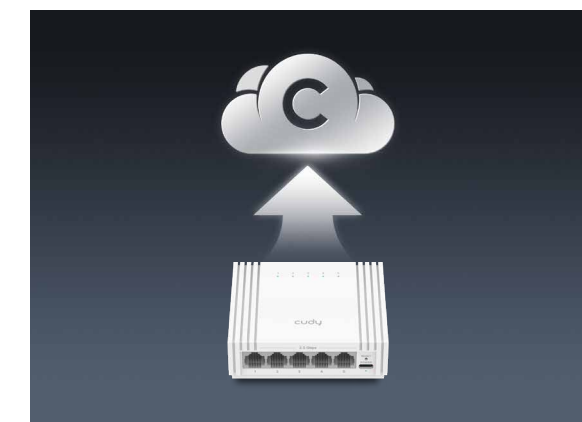
Loop Detection/Prevention

Automatically detects network loops and blocks affected ports. The indicators will show what ports caused loops.



Port Mirroring

Port Mirroring enables real-time diagnosis and troubleshooting by monitoring TX and/or RX traffic on one or multiple ports.



Cloud Management

Easily manage your switch via Cudy App. Configure VLAN settings and monitor throughput performance at your fingertips.

Highlights

A 5-Port 2.5G switch with management features and USB-C power input, ideal for 2.5 Gbps wired network expansion for NAS, gaming PC, and creator PC.

- Powering via USB-C
- 5× 2.5G Ethernet Ports
- Web Management
- VLAN, QoS, Port Trunk, etc
- Loop Detection and Prevention
- Desktop, Wall-Mount
- 119×85×28 mm (4.69×3.35×1.1")

Package Content

- HS105U
- USB-C to USB-C Cable
- Installation Guide

Specifications

Interfaces	2.5 Gbps RJ45 Ports	5
	Extend Mode Ports	Configurable
	VLAN Mode Ports	Configurable
	LED	Power Link/Act of Each Ethernet Port
	Power Input	USB-C Input
Performance	Copper Speed and Distance	Cat. 3 or higher cable: 100 meters at 10 Mbps
		Cat. 5 or higher cable: 100 meters at 100 Mbps
		Cat. 5e or higher cable: 100 meters at 2.5 Gbps
		Cat. 5e or higher cable: 250 meters at 10 Mbps
	Copper Speed and Distance Note	250-meter transmission is available when the port speed is set at 10 Mbps in the software.
	MAC Address Table	4096
	Max Switching Capacity	25 Gbps
Max Forwarding Rate	18.6 Mpps	
Jumbo Frame	9 KB	
Packet Buffer	4 Mbit	
Power	Power Methods	DC
	Power Input	4.8-18V ⁼⁼ , max. 6W
	Power Consumption	Max. 6W, Idle. 1.6W

Specifications

Reliability	EMS	IEC/EN 61000-4-2, Level 2 ESD: Contact: 4kV; Air: 8kV
		IEC/EN 61000-4-5, Level 3 Surge: Power: DM 2kV, CM 2kV; RJ45: CM 4kV
Environment		Operating Temperature: 0 °C ~ 40 °C (32 °F ~104 °F)
		Storage Temperature: -40 °C ~ 70 °C (-40 °F ~ 158 °F)
		Operating Humidity: 0% ~ 100% non-condensing
		Storage Humidity: 10% ~ 95% non-condensing
Mechanical	Dimension	119×85×28 mm 4.69×3.35×1.1 inches
	Casing Material	Plastic
	Installation	Desktop Wallmount via mounting holes
Ordering Information	Retail Package Dimension	119×109×37 mm 4.69×4.29×1.46 inches
	Units per Carton	60
	Carton Dimension	41.3×35.7×26.2 cm 16.26×14.06×10.31 inches

Switching	802.3 Protocols	802.3x Flow Control	
		802.3i 10BASE-T	
		802.3u 100BASE-T	
		802.3ab 1000BASE-T	
		802.3bz 2.5GBASE-T	
		802.3az Power Saving	
	802.1 Protocols	802.1p: LAN Layer 2 QoS/CoS	
		802.1q: VLAN Bridge Operation	
	Port Management		Port On/Off
			Port Negotiation Speed
Port Trunk (Static Aggregation)			
Port Mirror			
Data Rate Limit			
Jumbo Frame Settings			
Storm Control			
Traffic Monitor			
MAC Address Management			
Port Mirror Sessions			1
Port Trunk Groups	2		
Max Port per Port Trunk Groups	4		



Specifications

Switching	L2 Features	Loop Prevention
		802.1Q VLAN
		DSCP QoS
		802.1p QoS
		Port-Based QoS

System	Control Methods	Config Web Page
		Cudy App (Requires FW upgrade)
	Firmware Upgrade	Local Upgrade
	Reliability	Backup and Restore
	Diagnostic Tools	Cable Status/Length Diagnosis
		Ping
	Languages	English
		Bengali
		German
		Spanish
		French
		Portuguese
		Russian
Arabic		
Indonesian		
Hindi		
Urdu		
Traditional Chinese		
Simplified Chinese		